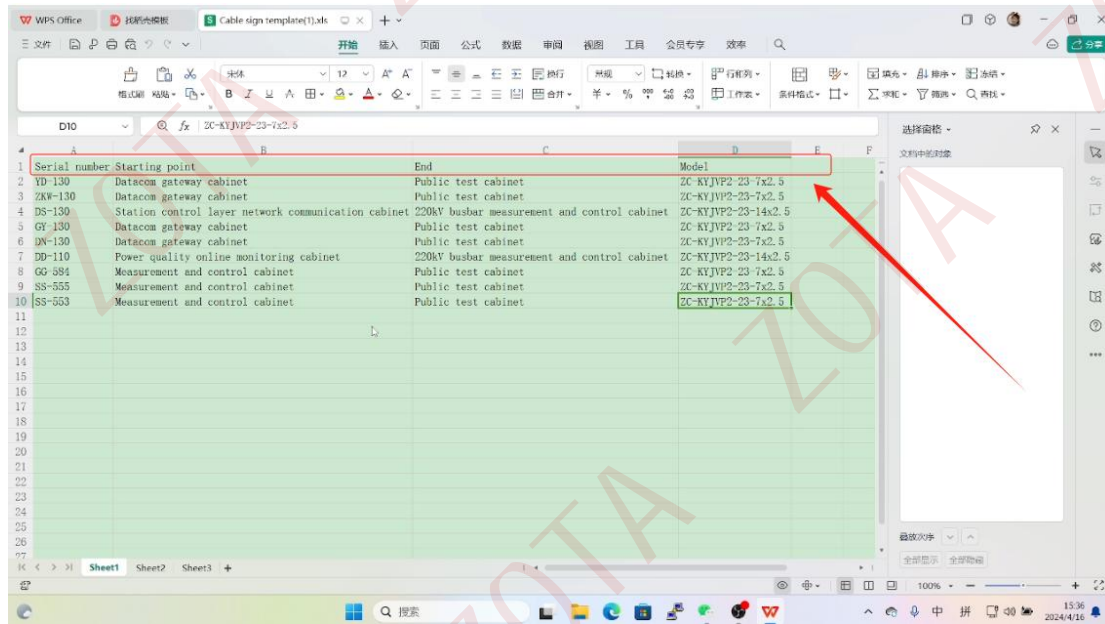


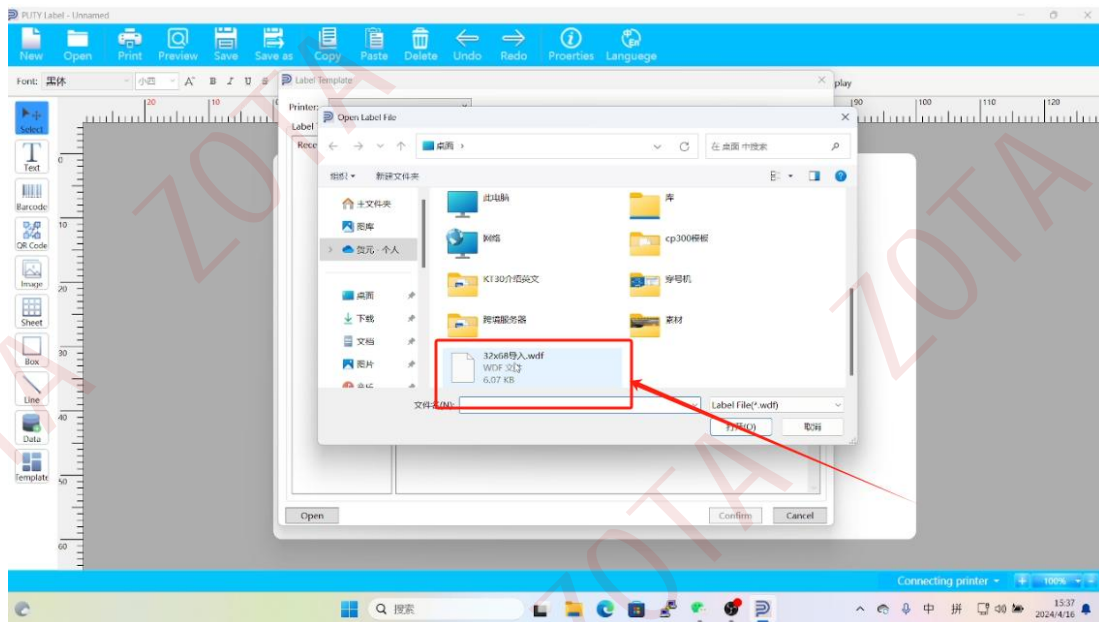
Excel data import

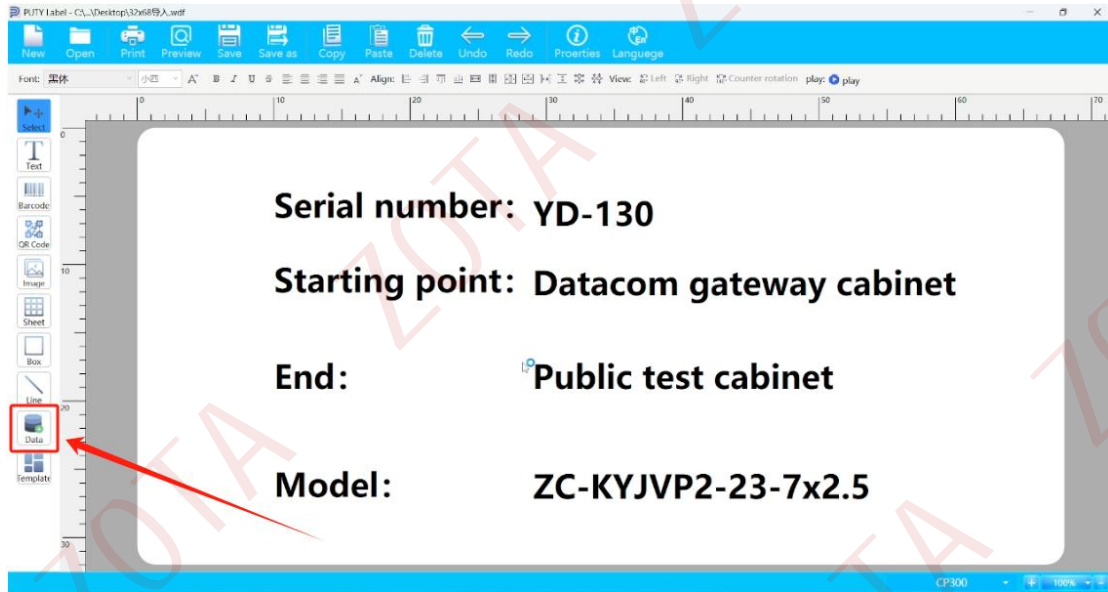
If you need to print signs in batches, you can import the database and select the Excel table as the original file of the database.

First create an Excel table and divide the required input cable brand content into four columns. The first column is the number, the second column is the starting point, the third column is the end point, and the fourth column is the model.

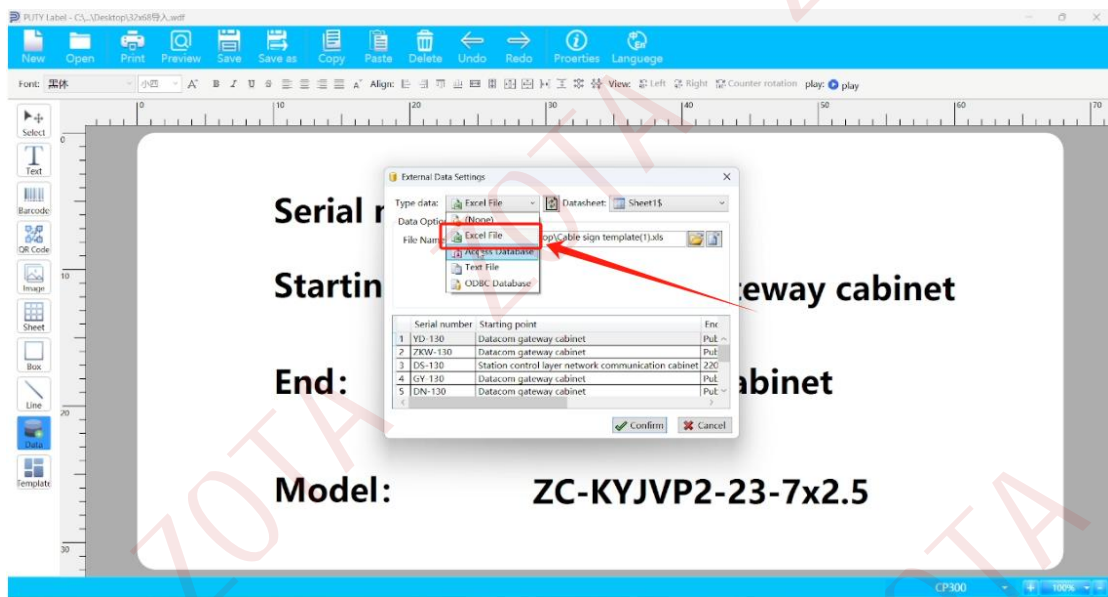


After creating the form, save the form and open the editing software of the signage machine.

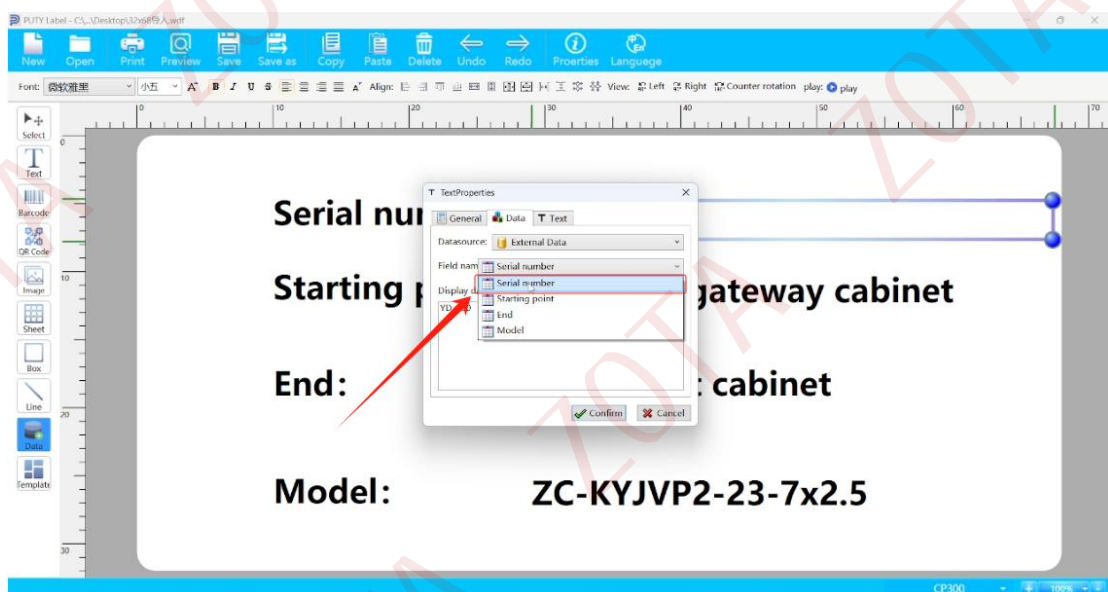
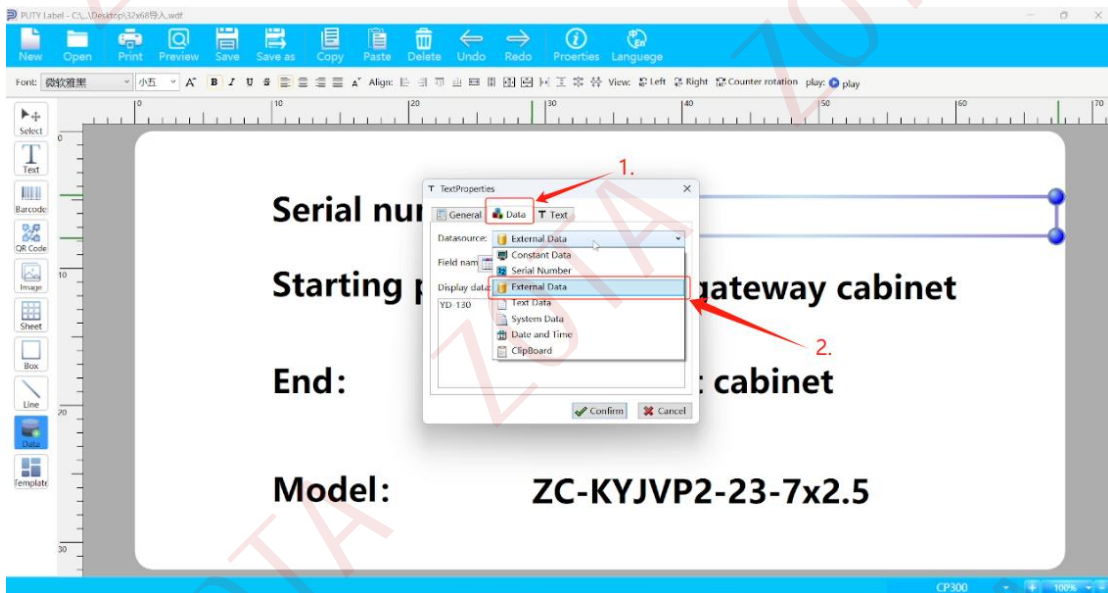
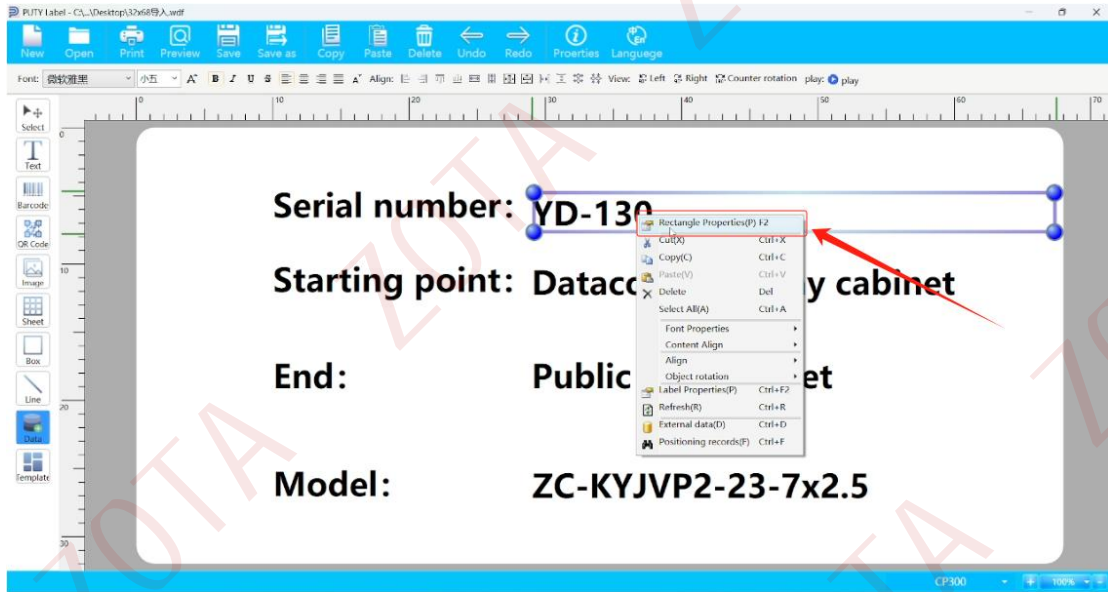




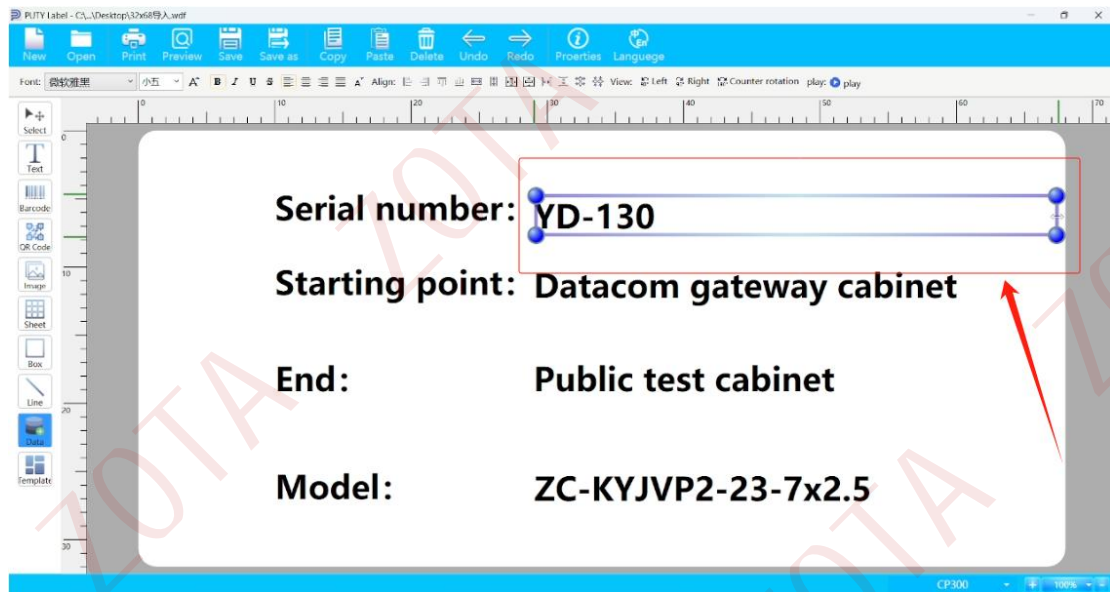
Select the Excel file in the data type, find the saved table, and click to open it. This is the database that has been imported.



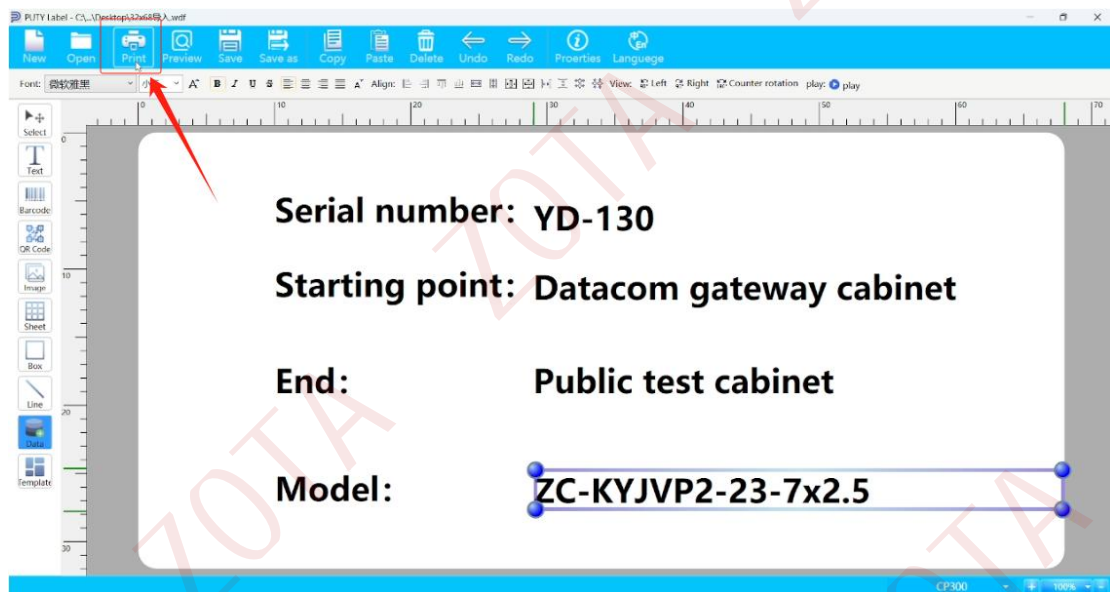
Click the text box after the number, right-click the object properties, click data, select external data in the data source, select the corresponding field in the field, number to number, starting point to starting point, end point to end point, model corresponds to model.



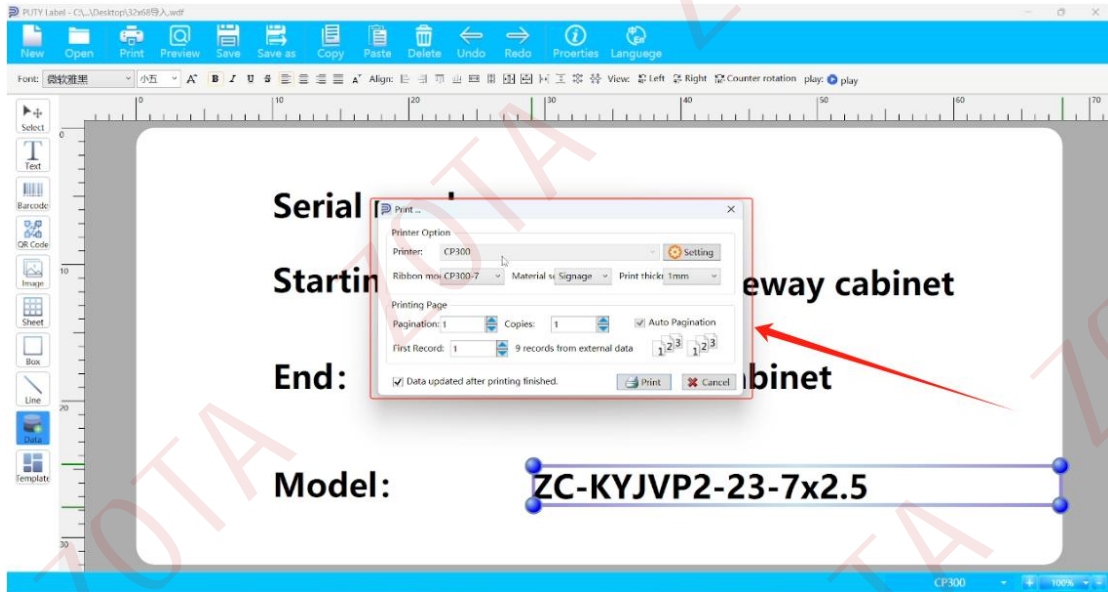
Resize text box



Click to print



Check the printer model CP300, select the print density, material, thickness, and the number of printed pages defaults to 1.



According to the imported data records, you can freely choose and print them all at once or in batches.

The starting record represents the first data printed each time. After selecting, click Print.

